

The North American Truffler


Journal of the North American Truffling Society


Volume 40, Issue 1


FALL 2022

 In this Issue:	Page #
◆Page 1 things	1
◆Hybrid meeting info	2
◆Fall 2022 Zoom speakers	3-4
◆North American FungiQuest	5
◆NATS Potluck	6
◆Event highlights	7
◆FunDiS Rare Fungi Challenge	8
◆Psilocybin in Oregon event	9
◆ZOOM info, iNAT info	10
◆Page of un-interesting things	11
◆ NATS registration form	12

Announcements

 NATS speaker meetings have gone hybrid! See page 2 for details regarding in-person and Zoom meeting options.

 It's almost here...



...don't skip page 5!

A Note from the Board: Changes to NATS Membership Dues

During our most recent board meeting held June 16, 2022, NATS board members agreed to changes to our membership protocols. NATS' Membership Chair noted it now makes sense to charge non-US member applicants the same as domestic applicants, given that membership information is now communicated electronically. Therefore, dues for individual membership, as well as business and non-US individuals, will be **\$20**. We also decided to clarify our definition of family memberships. In order to encourage more young people to join, a fee of **\$10** will be applied for each additional member **only** for those 18 years or older in the same household. These changes will soon be reflected on the NATS website.

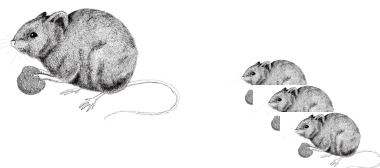


Photo by Ben Lemmond



In-Person + ZOOM = No excuses to miss NATS meetings!

Important protocols and format changes to note

Good news! OSU's Botany Department has kindly agreed to let NATS hold in-person speaker meetings in their departmental conference room, **2602 Cordley Hall**. This new, nice, room is located just around the corner from our previous meeting site and is equipped with requisite electronics for hybrid meetings. Thanks to professors Jesse Uehling and Joey Spatafora for letting NATS return to Cordley!

This opportunity for in-person meetings obligates NATS to address lingering COVID concerns with protocols appropriate to keep our beloved members safe. We will follow the science as best we can so, as basic measures such as social distancing, vaccination, and mask wearing are proven to greatly reduce the risk of illness to our more vulnerable members, we ask that you please:

- 🎧 Please attend meetings via Zoom if you are feeling sick or have a known recent exposure to COVID;
- 🎧 Attend in-person meetings **ONLY** if you are fully vaccinated. If not, please join us via Zoom;
- 🎧 Inform NATS 'leadership' if you subsequently become infected within one week of attending a NATS so we can inform other meeting goers who should be tested

Masking IS required for the October meeting, given the start of a new school year and resurgence of students from all over the country - and the world! We want to assess how Benton county fares with this influx before dropping mask requirements.

Thanks for protecting our members!

Format changes for hybrid meetings: 1 thrilling meeting, not 2

Since the onset of COVID restrictions, NATS speaker meetings have come in two sessions: a (sometimes) brief business meeting beginning at 7 p.m. Pacific time, followed by a separate meeting featuring our speaker at 7:30 p.m. In order to more smoothly accommodate Zoom participants in our new hybrid meeting scenario, we will be merging the business and speaker meetings into one. There will be **ONE** zoom invite - those participating via Zoom will click on one link opening at 7 pm. People who attend in person should be at the new meeting room (2602 Cordley Hall) by 7 p.m. - or earlier to enjoy some refreshments!

There will **not** be two zoom meeting invitation- ZOOM attendees will need to log into watch beginning at 7.

NATS Fall 2022 Featured Speakers

October 4, 2022: Brandon Stairs

The effects of environmental selective pressures and bacteria endosymbionts on *Rhizopus microsporus* molecular diversity



Join NATS as we kick off the Fall 2022 speaker meetings with Oregon State University graduate student and Pavelek Scholarship Awardee Brandon Stairs. Stairs currently studies with OSU's Botany and Plant Pathology Department, where he researches factors impacting virulence of *Rhizopus microsporus*.

He theorizes that genomic differences are the primary determining factor of virulence, and believes these differences can be identified through molecular comparison of clinical and environmental isolates. Thus far, his research has yielded preliminary data suggesting just such a correlation between genomic composition and geographical distribution of *R. microsporus*.

Stairs is curious about other things as well, including how geographically isolated populations may diverge at the intraspecific level. He also intends to investigate the role bacteria plays in fungal virulence with comparisons of fungal isolates housing endosymbiont bacteria within their hyphae to those that are bacteria free. He hopes to apply the skills gained in the course of his research toward a career in medical mycology to advance knowledge in fighting fungal diseases. Come be curious!

November 8, 2022: Ben Lemmond

Hidden treasures: updates on taxonomy and ecology of Morchellaceae

The ascomycete family Morchellaceae may be best known for the iconic morels (*Morchella*), but it also contains some of the most highly regarded gourmet truffle genera found in North America. Culinary varieties such as *Leucangium* and *Kalapuya*, are well-known in the Pacific Northwest, while a third choice edible, *Imaia*, less often collected or sold, can be found in eastern North America.

Join NATS at the November speaker meeting where PhD candidate Ben Lemmond will present updates on aspects of the trophic ecology and systematics of these three truffle genera. Lemmond studies the systematics and ecology of truffles in the lab of Matthew Smith at the University of Florida. Reared in Charlotte, North Carolina Ben has lived in many places: Olympia, WA; Ahmedabad, Gujarat; Burlington, VT; and now, Gainesville, FL. He clearly loves working with truffles and hopes his PhD work will generate interest for North American edible truffles.



NATS Fall 2022 Featured Speakers, con't

December 6, 2022: Dr. Eduardo Nouhra

Discovering the hidden fungal diversity at the end to the world

Join NATS at the December 6, 2022 speaker meeting where Doctor Eduardo Nouhra will delve into the diversity of basidiomycota fungi. His research is primarily focused on the identification of new species, their kinship relationships, and their interactions with other groups of organisms (ectomycorrhizal, spore dispersal, etc.). The talk will emphasize studies conducted in Patagonia and northern Argentina.

Dr. Nouhra is both teacher and researcher at the National University of Córdoba and CONICET where he leads courses on fungi, algae, and other biological groups.



Mount Pisgah Arboretum

Cascade Mycological Society

& Lane Community College Present:

Mushroom Festival 2022

**ADVANCE TICKETS
REQUIRED**



In partnership with [Lane Community College](#) and [Cascade Mycological Society](#), Mount Pisgah Arboretum presents the Mushroom Festival on Sunday, October 30th, 2022.

3600 tickets are available by pre-sale only.



Great North American FungiQuest

September 15 - October 15, 2022



Robert Courteau, President of the Ottawa Mycological Society, NAMA member, and creator of Think Fungi (www.thinkfungi.org) reached out to NATS and numerous other mycological associations with regard to a fungi observation challenge that will be taking place between September 15 - October 15, 2022.

The event, dubbed The Great North American FungiQuest, comes on the heels of the Great Aussie FungiQuest, a project that garnered thousands of fungi observations to develop a "fungi map" of that continent. The plan is to do the exact same here, with the hope of reaching at least **20,000** observations with an even bigger ambitious goal of **50,000** observations.

As a member of NATS, you know the importance of fungi and the need to collect as much information as possible to better understand, and protect, the kingdom.

Participation is simple:

- 1) take photos of fungi, slime molds and lichen you find;
- 2) upload them to your favorite observation app (iNaturalist, Mushroom Observer, QuestaGame, CitSci).
- 3) Observe amalgamated data on the developing NorthAmerican map found on the FungiQuest Observation Site.



So get out there, spread the word, and participate, as you'll likely be doing it unintentionally anyway! If the virtue of pure citizen science isn't enough of a draw for you, there will be prizes courtesy of project partners NorthSpore and FreshCap. You can learn more about prizes, contest, and an online (yes) mushroom hunt by visiting:

<https://thinkfungi.org/FungiQuest/>

Thanks to NATS members who have been contributing to our "Truffles of North America" iNaturalist project - we are now up to **1220 observations!** Anything you add to our project will automatically go into the Great North American FungiQuest.

Return of The North American Truffling Society annual potluck!

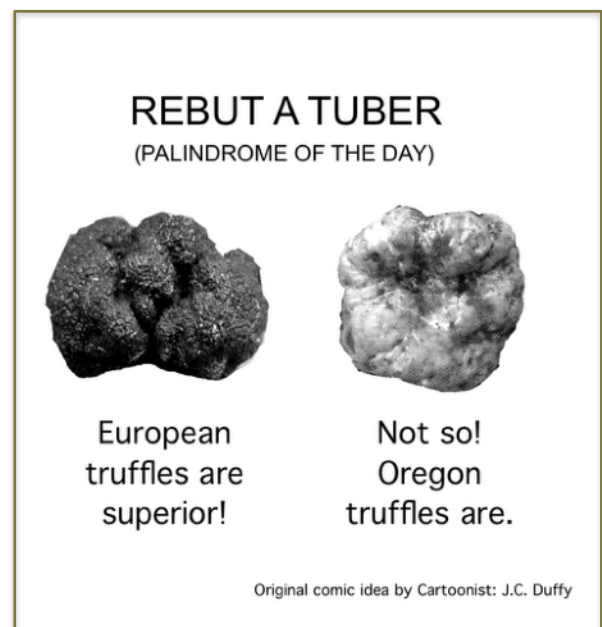
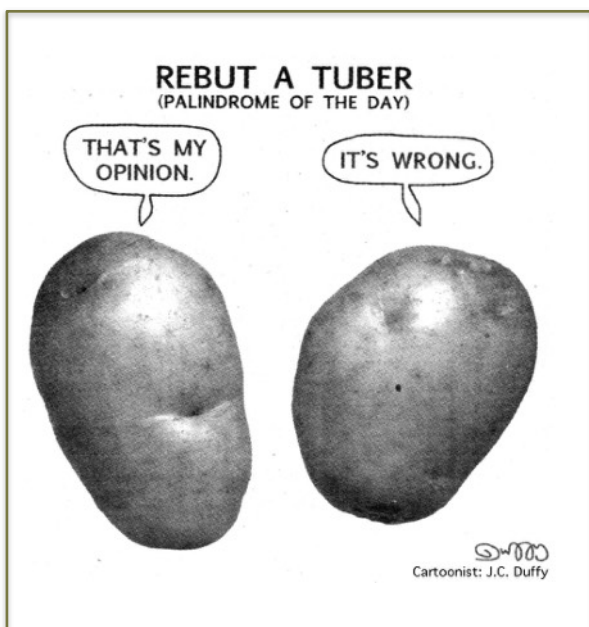
NATS was able to once again hold the potluck after a COVID induced hiatus. The event was held in May at the newly renovated Corvallis Community Center (nee Corvallis Senior Center). We used the opportunity to also celebrate Dr. Jim Trappe's 90th birthday, as COVID restrictions had not allowed us to celebrate last August.

Jim surprised us by bringing a pair of his truffling jeans to illustrate his long years of kneeling on his left knee while truffling - with the eventual result of knee surgery. If you want to hear future amusing stories by a master story teller, come to next year's potluck on February 11th!



Thanks to Dave Pilz for the photos!

Also thanks to Dave Pilz for sending in his reprise of a J.C. Duffy cartoon:



A Day Spent Scavenging

NATS facilitated a foray last April, thanks to an unexpected visit by Ben Lemmond from Matt Smith's mycology lab in Florida. Ben is working on phylogenies of some ascomycetes, including *Leucangium* and *Genea*. Those of you who were fortunate enough to attend an earlier NATS foray with Hillary and Heather Dawson and their excellent truffle dog, Rye, will know that Rye is superb at finding *Genea* truffles. A small group of people and two dogs gathered to help Ben get some fresh truffles for his studies. Hilary reports, "Rye found Ben two fresh black truffles of decent size, as well as an endless supply of *Genea* (not a surprise!). He also found a *Hymenogaster subalpinus* and the usual *Elaphomyces*." Be sure to view these observations on our "Truffles of North America" iNat project page.



Thanks to Hilary, Heather, Carolina, and all the others who helped support Ben's work – it looks like a good time was had by all!



Don't Forget: FunDiS West Coast Rare Fungi Challenge

October 2020 - March 2025



FunDiS is a nonprofit 501(c)(3) organization dedicated to a world in which the fungal kingdom is fully documented, understood, appreciated and protected. With just under 10% of fungal species documented and impending threats of habitat loss, pollution, and climate change, the need to catalogue and map fungal species before they expire is acute.

Are you hooked to the thrill of a mushroom hunt? Does kingdom fungi ring your bell? Have you a hankering for community science? Then join thousands of community scientists across North America in the Fungal Diversity Survey (FunDiS).

FunDiS strives to increase scientific knowledge and public awareness of the critical role of fungi in the health of our ecosystems and to better utilize and protect them. We do this by equipping community scientists, working with professionals, with the tools to document the diversity and distribution of fungi across North America. There are 3 primary FunDiS programs: improved diversity databases; rare fungi challenges; community science projects.

What's a Rare Fungi Challenge and is there one in my area?

Rare fungi challenges document rare and threatened fungi in various regions of North America. And YES! There is one in the PNW. Piloted in October 2020, the West Coast Rare 10 Challenge resulted in collections of 10 endangered fungal species from Alaska to California. The West Coast Challenge will continue, year-round, with searches for an additional 10 fungal species. Help us find and document a target list of rare, under-documented or potentially threatened fungi. Your high quality citizen observations can make a difference to scientists, conservationists, and fungi. For more information about FunDiS and to see the next 10 endangered species on the target list, please visit: <https://fundis.org/protect/take-action>

Be sure to check out FunDiS's bi-monthly eNewsletter, **Funga Decoded** at: <https://fundis.org/resources/email-list>



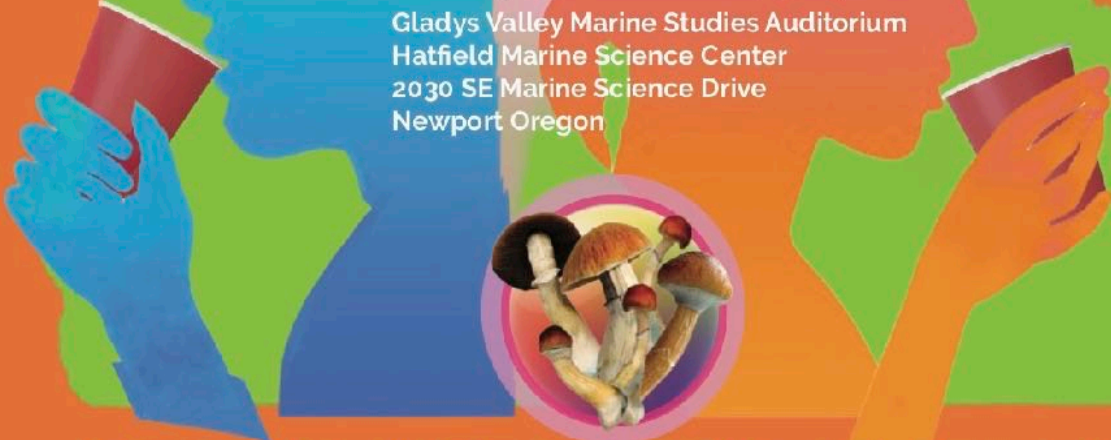
Come to a fascinating event, featuring Oregon State University's very own mycologist, Dr. Jesse Uehling!

Oregon's Psilocybin Future

Newport

Saturday, October 1st, 3-6pm

Gladys Valley Marine Studies Auditorium
Hatfield Marine Science Center
2030 SE Marine Science Drive
Newport Oregon



Lincoln County Mycological Society Presents

Measure 109: Mushrooms, Mysticism, Trauma, and Healing

Jessie Uehling PhD

Mycologist at Oregon State University and for the Oregon Psilocybin Services Advisory Board:
"Diversity, Biology, and the History of Psilocybin-Containing Fungi, and the Ethno-mycological
Usages in Historical Indigenous Practices".

Angela Allbee

Manager of Oregon Psilocybin Services of the Oregon Health Authority:
"Charting Oregon's Roadmap for Measure 109 and Supervised Use of Psilocybin Services in 2023"

Oregon Film Premiere:

"Psychedelia: The History and Science of Mystical Experience"

an hour-long documentary on the discovery, research, and use of psychedelic
substances from the 1930s to the present day.

Tickets available at: <https://LCMycologicalSociety.brownpapertickets.com>

\$5 general admission, FREE for LCMycologicalSociety members.
(Memberships available at the door, but prior ticketing recommended.)

For more information:

FB: [LincolnCountyMycologicalSociety](https://www.facebook.com/LincolnCountyMycologicalSociety)

Email: lcmycosociety@gmail.com

Web: lcmycosociety.org or lcmycologicalsociety.brownpapertickets.com

Phone: 530-748-9365

Disclaimer: Hatfield Marine Science Center, as part of Oregon State University, hosts university-sponsored events and rents its facility to other groups. Clients, such as presenters and performers, do not necessarily represent the views or policies of the university.

NATS ZOOM Meeting Refresher

Your virtuous patience and virtual attendance as we navigate difficulties presented by the ongoing pandemic are deeply appreciated. And we don't want to miss anyone. If Zoom seems a mystery, you are certainly not alone! Direct your questions to NATrufflingsociety@gmail.com.

NATS monthly meetings will now be via Zoom, as well as in person. Meetings will start at 7:00 p.m., with the NATS business meeting. Only one Zoom invitation will be sent for the combined business and speaker meetings. The speaker will be introduced, fascinate us with their subject material, and linger for follow-up questions/discussions. In an effort to keep meetings short, speakers will present for 40 minutes or less. Members will be able to interact with audio or through the Zoom chat.

When you receive your monthly NATS email about upcoming meetings, you will be asked to send an email to NATrufflingsociety@gmail.com if you would like to receive an invitation to that month's Zoom meeting. Our meetings are hosted through Oregon State University, and we will be very sure to keep them securely password protected to avoid uninvited guests.

Want to share your Zoom meeting invite with an interested non-NATS member?

Don't forget to let us know their name and email address so we will allow them into the meeting!

NATS iNaturalist Submission Process

If you have a specimen that you think should be accessioned, be sure to dry the truffles to prevent rot (see <https://fundis.org/sequence/collect-dry/dry-your-specimens>), and please email NATrufflingSociety@gmail.com to learn if we can accept your specimens.

Additional information fields are provided to record your observations on iNaturalist. Such information is often crucial for specimen identification, so if possible, please include:

Collector's (real) name for the specimen label

Elevation*

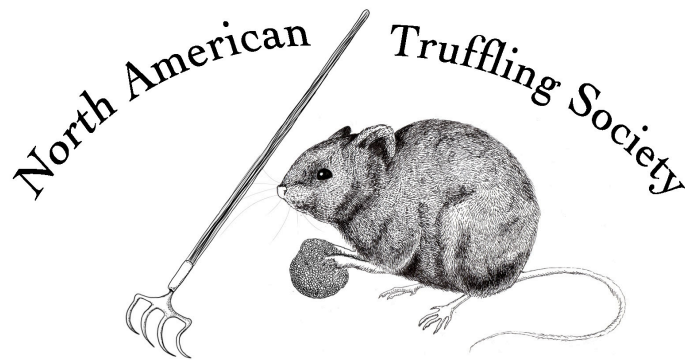
Slope*

Overstory/understory trees & shrubs (scientific name preferred)

Substrate (moss, mineral soil, soil, wood, or litter)

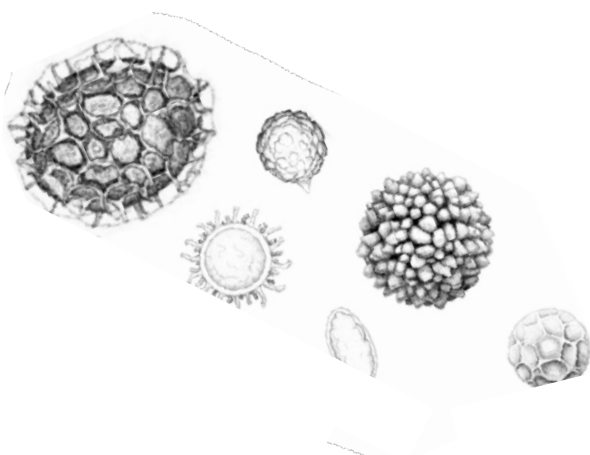
Fresh notes such as colors and odor (using the notes section on iNaturalist)

*Estimates of these data are acceptable, however, **PLEASE** denote such instances.



WANTED

Creative suggestions for newsletter topics, comments about articles, your opinions about any truffle and/or fungi related topic. Send contributions to: newsletter editor Sarah Shay at NATrufflingsociety@gmail.com



Information contained in *The Truffler* is to be used at your own risk. NATS Inc., its officers, editors, and members are not responsible for the use or misuse of information presented herein. If you are unsure of mushroom identification or safety, **please** consult an expert! In addition, attending and participating in a NATS event is entirely at your own risk. No person associated with NATS is either directly or indirectly responsible for anything that occurs during, or in transit to/from, a NATS event. Be responsible.

UNIDENTIFIED TRUFFLE?

What to do?

Visit www.natruffling.org for a printable field data card (hand-written submissions on awesome stationary certainly welcome). Please provide a description of significant characteristics of the habitat immediately surrounding the collection site, including the dominant trees and other vegetation species and slope/exposure. Also include site coordinates (GPS data, if available) and, when possible, color digital images showing a surface view and an interior section, cut top-to-bottom, through the center of the truffle.

Prior to submission, gently remove loose soil from the specimen. **DO NOT** scrub briskly or use a stiff brush; an intact outer skin is important for identification. Dry thoroughly using a food dehydrator OR by refrigerating samples in a loosely closed paper bag for a couple days. For faster drying, cut truffles in half to reduce moisture trapped by the outer skin.

Mail your dried specimen to:

The North American Truffling Society
P.O. BOX 296
CORVALLIS, OREGON 97330

If you mail a dried specimen, please let us know by sending an email to NATrufflingsociety@gmail.com.

The North American Truffling Society, Inc.

The North American Truffling Society is a non-profit organization based in Corvallis, Oregon that brings together amateurs and professionals who are interested in fungi that fruit below ground. The mission of NATS is to enhance the scientific knowledge of North American truffles and truffle-like fungi, and promote educational activities related to truffles and truffle-like fungi.

NATS is the only organization of its kind in the world devoted to gathering truffles and enhancing our knowledge about them. Primary activities include educational meetings and truffle-collection forays. NATS members collect truffles worldwide, thereby contributing to our understanding of their habitat and range, identification and classification, and edibility. NATS specialists also provide truffle identification services.

NATS offers:

- Forays (field trips) to collect truffles.
- Monthly educational meetings (autumn through spring) on varied mycological topics.
- A periodic newsletter, "The North American Truffler: Journal of the North American Truffling Society", describing recent truffle finds, program meetings and other topics.
- An annual potluck dinner.
- The excitement of participating in valuable scientific research.
- New and interesting friends.

NATS welcomes new members. As a nonprofit, membership dues are tax exempt and deductible. Dues may be paid by cash (in person) or by check (US Mail). If you pay by check, please retain your canceled check as your receipt for tax purposes. You can also pay online with a credit/debit card via Paypal at www.NATruffling.org/renew.htm.

For further information on truffles and membership, contact NATS and START TRUFFLING!

Please return completed form (with check made out to NATS) to:

THE NORTH AMERICAN TRUFFLING SOCIETY, INC.

P.O. BOX 296

CORVALLIS, OREGON 97330

www.natruffling.org



Name(s): _____ Phone: _____

Address: _____

City: _____ State: _____ Zip: _____ Country: _____
(Province) (Postal code)

Email address(es): _____

Annual membership fees: \$20 first family member, \$10 each additional family member in the same household over the age of 18 years. Businesses: \$20. Individuals/Businesses from other countries: \$20, **payable in US funds.**

Annual contribution categories: Donor: \$20-\$49; Contributor: \$50-\$499; Sustaining \$500+